

# FLOWTREND

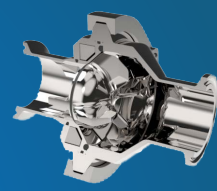
SMARTER, FASTER FLUID HANDLING SOLUTIONS

## YEV SHUTTER CHECK VALVES. MAGNETIC TECHNOLOGY.

Captured Seat

Fully Hygienic Design

Reduced Maintenance



3-A Certification  
Authorization #: 3414

FLOWTREND IS THE EXCLUSIVE AMERICAN DISTRIBUTOR OF YGROS VALVES

YGROS technology sets new standards for check valves, thanks to a patented magnetic principle which replaces the conventional spring, guide plate and stem

### FEATURES & BENEFITS

#### No Spring, Guide plate, or stem in product zone

- No maintenance as a result of broken or jammed spring
- Springless design allows for use in corrosive areas (brine systems, etc.)
- Precision machining from bar stock insures Superior Hygienic Design
- Shutter guides insure proper seating
- Reduced parts and shutter "wings" insure laminar vs. turbulent flow
- Hot water and steam compatible; good resistance to aging and weathering

#### Retained Seat

- Prevents product contamination caused by seat loss in product
- Prevents valve failure as a result of seat loss
- Allows for PTFE seat which will extend service life (less maintenance) 2 piece shutter
- Unlike "friction" fit O-Ring/V-Ring seats, the "compression" fit insures the seat does not separate from the shutter and enter the product.

#### Technical

Controlled Compression prevents over torque of clamp which cause gaskets or profiled O-rings to deform and enter product stream.

#### Technical Information

- Sizes: 3/4" - 4"
- Connections: US Clamp and Weld. DIN Clamp and Weld
- Option: Eccentric body for Horizontal Installation
  - 1 or 2 piece shutter design
- Materials: Body = 316L Stainless Steel; Shutter = Duplex Stainless Steel
  - Optional materials available
- Seal Materials: Available in EPDM, FPM, Silicone, PTFE
- Polish: 32Ra is standard.
  - Optional polishes available
- Temp Range: -40C [-40F] to 150C [302F] in standard version
- Max Product Pressure: 300 psi
- All product contact materials and seals are fully traceable
- Suitable for CIP/SIP
- Shutter interchangeable with EDF and YSV





### Vertical Configuration

SIZE	EDF WELD	EDF CLAMP
.75"	60mm [2.36"]	70mm [2.76"]
1.0"	72mm [2.83"]	77mm [3.03"]
1.5"	88mm [3.46"]	88mm [3.46"]
2.0"	98mm [3.86"]	98mm [3.86"]
2.5"	115mm [4.53"]	118mm [4.65"]
3.0"	140mm [5.51"]	145mm [5.71"]
4.0"	150mm [5.91"]	155mm [6.10"]
6.0"	179.5mm [7.07"]	183.5mm [7.2"]

### Horizontal Configuration

SIZE	EDF WELD	EDF CLAMP
.75"	60mm [2.36"]	70mm [2.76"]
1.0"	72mm [2.83"]	77mm [3.03"]
1.5"	88mm [3.46"]	88mm [3.46"]
2.0"	98mm [3.86"]	98mm [3.86"]
2.5"	115mm [4.53"]	118mm [4.65"]
3.0"	140mm [5.51"]	145mm [5.71"]
4.0"	150mm [5.91"]	155mm [6.10"]
6.0"	179.5mm [7.07"]	183.5mm [7.2"]

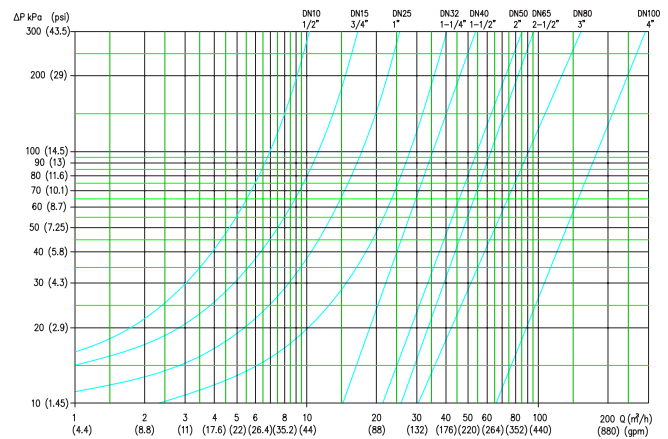
### Part Number Build Example

Completed PN: YEV-3A-CL-3.0-E-316

Y	3A	CL	3.0	E	316	
TYPE	POLISH	CONNECTION	SIZE	SEAT MTRL	BODY MTRL	SPECIAL
Y=YEV	3A=32Ra	CL=Clamp		E=EPDM	316=316L	P = Port to Port Dimension change
	ID=32Ra on ID only		.75"	V=FKM		P1 = LK
		CW = Clamp x Weld	1.0"	S=Silicone		P2 = DE
			1.5"	H=HNBR		D = Demo
			2.0"	P=PTFE		O = Other
			2.5"	P=PTFE		
			3.0"			
			4.0"			
			6.0"			

### Pressure Drop Diagram

Based on water at 20C [68F]



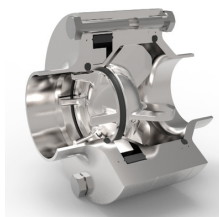
DN15 = 3/4"      DN40 = 1 1/2"      DN65 = 2 1/2"      DN100 = 4"  
 DN25 = 1"      DN50 = 2"      DN80 = 3"

### YGROS YEV

STANDARD OPENING PRESSURES

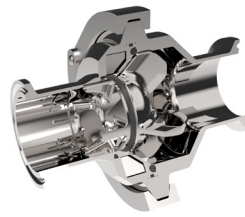
INSTALLATION	FLOW DIRECTION	OPENING PRESSURE
Vertical Lines	Bottom to Top	0.48 / 0.80 psi

### The Complete Family of Magnetic Check Valves



#### EDF

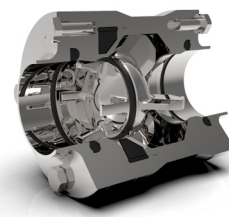
For dairy, food, beverage, brewery, pharmaceutical, cosmetic.



#### YEV

#### Clamped Body Valve

For dairy, food, beverage, brewery, pharmaceutical and cosmetic manufacturing that require a clamped body design.



#### YSV

#### Extractable Valve

For beverage, brewery, pharmaceutical, cosmetic, and chemical manufacturing that require flange connections.